



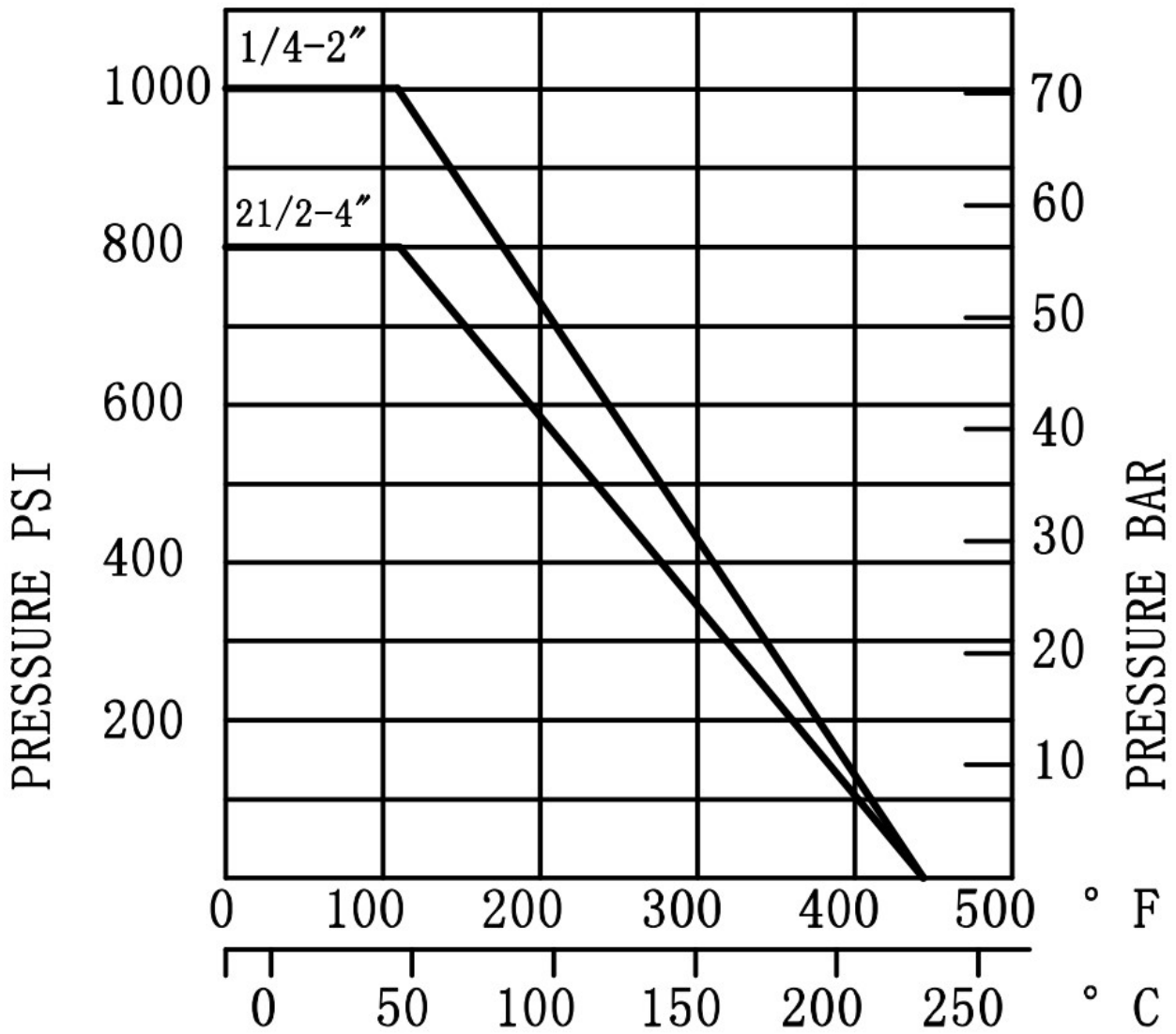
### HBV-203M, HBV-302M Valve Torque Requirements

Size	Torque N*M
1/4"	≤3
3/8"	≤4
1/2"	≤8
3/4"	≤10
1 "	≤15
1 1/4"	≤20
1 1/2"	≤30
2"	≤40
2 1/2"	≤70
3"	≤90
4"	≤100

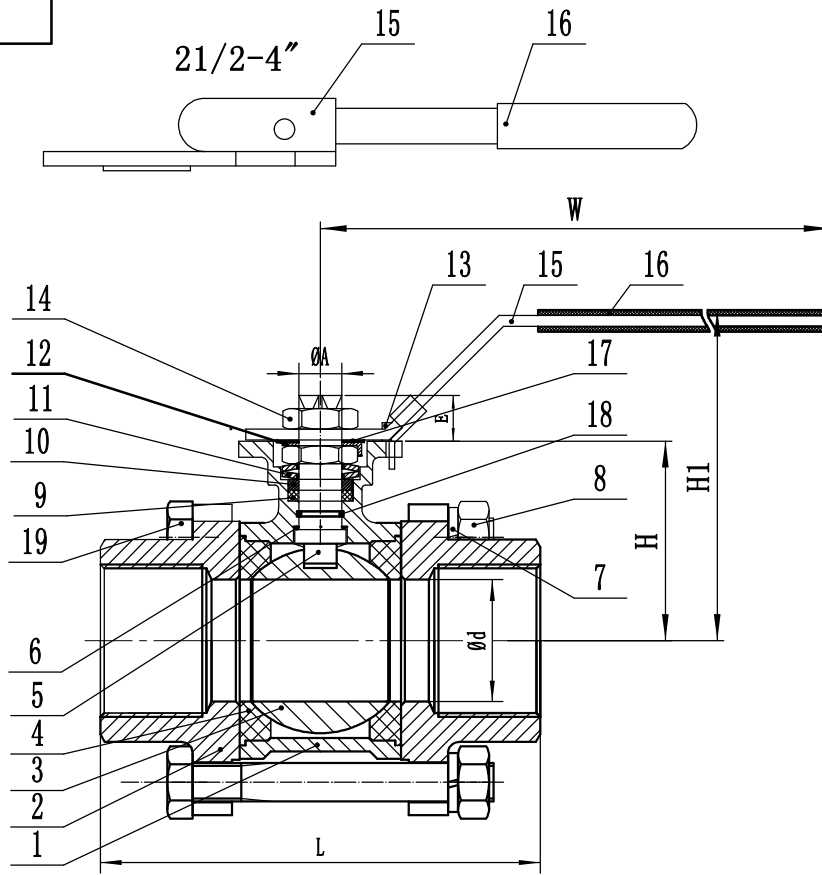
Note: Material PTFE

1. Under pressure, the torque value of our ball valve will increase by 8%-10%.
2. If you want to choose an actuator that is compatible with our ball valve, you should choose an actuator with a torque that is 30%-50% greater than the torque table of the ball valve.

## RATING 1/2"~4"

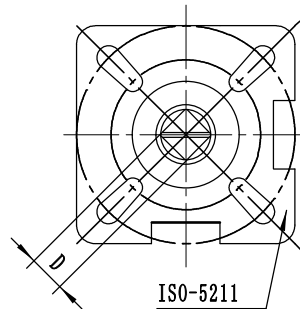
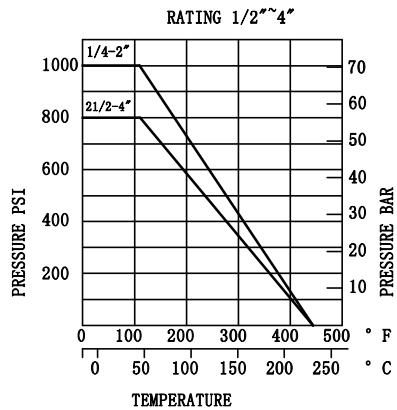


HBV-302M



	$\text{Ød} \pm 0.5$	$L \pm 2$	$H \pm 1$	$D_{-0.07}^0$	$E \pm 1$	$A_{-0.3}^0$	ISO5211	W	H1
1/4"	11.6	55	38.5	9	9	12	F04/03	143	70
3/8"	12.5	60	38.5	9	9	12	F04/03	143	70
1/2"	15	75	38.5	9	9	12	F04/03	143	70
3/4"	20	80	47.5	9	9	12	F04/03	143	79
1"	25	90	59	11	11	14	F05/04	163	95
1-1/4"	32	110	63.5	11	11	14	F05/04	163	100
1-1/2"	38	120	79	14	15	18	F07/05	188	116
2"	50	140	86.5	14	15	18	F07/05	188	124
2-1/2"	64	162	109.1	17	17	22	F10/07	350	141
3"	76	184	117	17	17	22	F10/07	350	149
4"	94	228	136	22	22	28	F12/10	350	173

19		BOLT	4(6)	304				
18		O-RING	1	VITON				
17		WASHER	1	304				
16		HANDLE SLEEVE	1	PLASTIC				
15		HANDLE	1	304				
14		HANDLE NUT	2	304				
13		STOP PIN	1	304				
12		LOCK WASHER	1	304				
11		BELLEVILLE WASHER	2	301				
10		RING	1	304				
9		STEM PACKING	1	PTFE				
8		BOLT NUT	4(6)	304				
7		SPRING WASHER	4(6)	304				
6		THRUST WASHER	1	PTFE				
5		STEM	1	304/316				
4		SEAT	2	PTFE				
3		BALL	1	CF8M/CF8				
2		CAP	2	CF8M/CF8				
1		BODY	1	CF8M/CF8				



3PC BALL VALVE WITH MOUNTING PAD